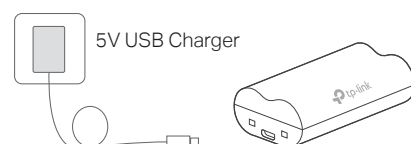


## Quick Start Guide

### Video Doorbell Camera Kit

## 01 / Charge the Battery

Charge the battery.



- **Charging:** Solid amber
- **Fully charged:** Solid green

Notes:

1. Charge the battery before use. This will take about 5~6 hours.
2. If you want to use the doorbell while charging the battery, we recommend purchasing another battery for your convenience.

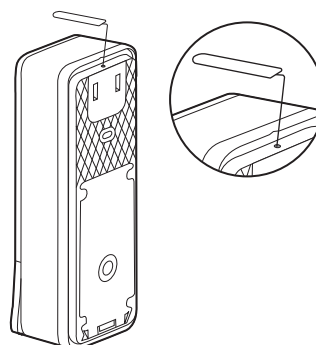
▶ **Setup Video**  
Scan QR code or visit  
<https://www.tp-link.com/support/setup-video/#cloud-cameras>



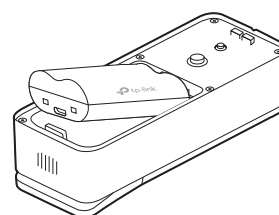
7106511519 REV1.2.3 \*Images may differ from your actual product.

## 02 / Insert the Battery

1. Use a pin to detach the doorbell.



2. Insert the charged battery.



## 03 / Set Up the Hub and Doorbell

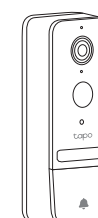
1. Get the Tapo app from the App Store or Google Play.



2. Follow the instructions in the Tapo app to set up your hub.

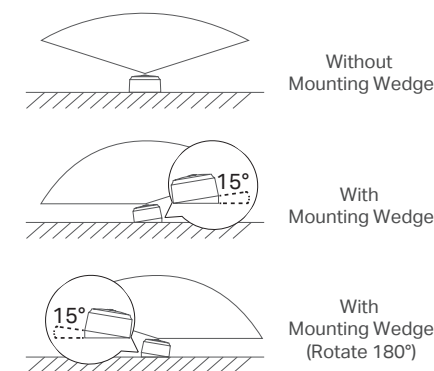


3. Follow the instructions in the Tapo app to set up your doorbell.



## 04 / Installation Tips

1. Install the doorbell on a flat wall.
2. The doorbell should be placed 1.2 m (4 ft) above the ground.
3. Use the included 15° mounting wedge for a more focused view from a specific side.



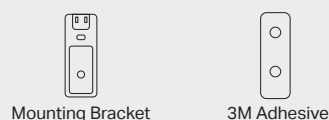
4. Avoid placing the doorbell close to a side wall in the field of view. If you must, use the mounting wedge to adjust the viewing angle to reduce reflected light from the wall for better night vision performance.

## 05 / Install the Doorbell

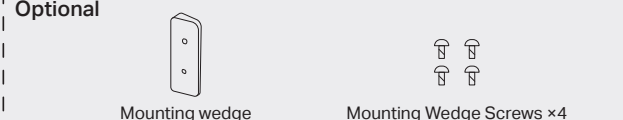
\*Preview video on the Tapo app to find the desired installation location.

### Option 1. Stick to a smooth wall

#### Required Accessories:



#### Optional



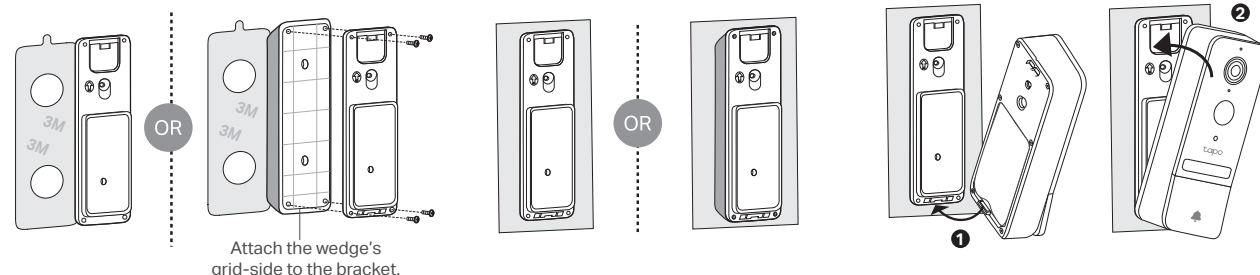
1. Attach the included **adhesive** to the back of the **bracket or wedge**. If you use the wedge to adjust angle, first affix the bracket and wedge with the **mounting wedge screws**.

**Note:** The adhesive is for one-time use. Avoid re-using the adhesive to ensure its adhesion.

2. Clean the surface using a dry cloth, stick the **bracket or wedge** with adhesive to a clean wall, and press it down for 15 seconds to ensure the bracket or wedge is firmly attached.

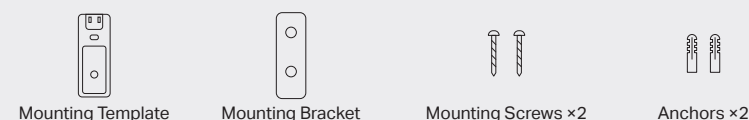
**Note:** Applicable with tile, glass, marble, metal, stainless steel, and smooth walls.

3. Align the doorbell on the bottom, and move it into place on top. Ensuring the doorbell is secured to the buckle at the bottom of the bracket.

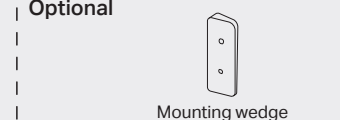


### Option 2. Mount to the wall

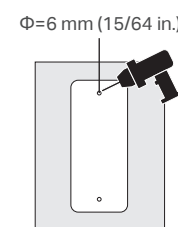
#### Required Accessories:



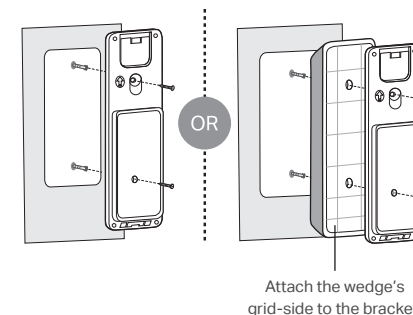
#### Optional



1. Stick the **mounting template** to the desired mounting place. Drill two holes according to the template.

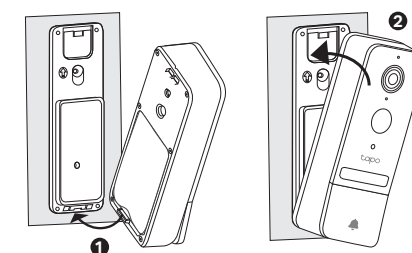


2. Insert two **anchors** into the holes. Use the **mounting screws** to affix the bracket (or wedge with bracket if you use the wedge to adjust angle) over the anchors.



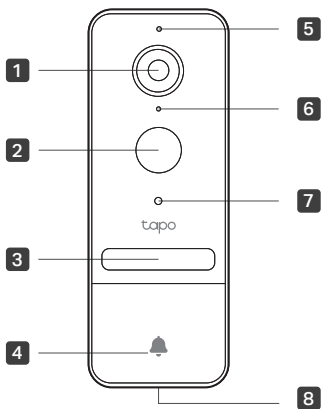
3. Align the doorbell on the bottom, and move it into place on top. Ensuring the doorbell is secured to the buckle at the bottom of the bracket.

**Note:** If you have trouble attaching the doorbell or it causes false anti-theft alarms, check if you overtightened the screws that the bracket bent. Adjust the depth of the screw and reinstall the doorbell.



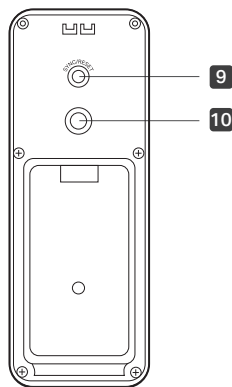
Doorbell Appearance

Front



- 1** Lens
- 2** Motion Sensor
- 3** Spotlight
- 4** Ring Button
- 5** Microphone
- 6** Status LED  
Indicates the status of your doorbell.
- 7** Light Sensor
- 8** Speaker

Back



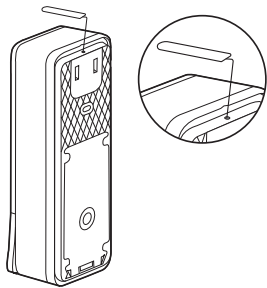
- 9** SYNC/RESET Button
  - Press for 1s: Pair with the hub
  - Press and hold for about 5s: Reset the doorbell
- 10** Anti-Theft Button

When the Anti-Theft Alarm is enabled on the Tapo app, an alarm will trigger once the doorbell is removed.

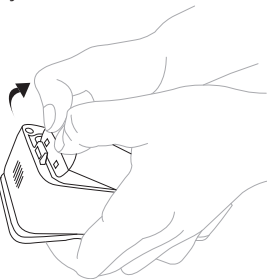
  - Press and hold for 5s: Pause the alarm (Continues to alarm when released)
  - Press and hold buttons **9** + **10** simultaneously for 10s: Disable the anti-theft alarm feature

How to Detach Doorbell and Remove Battery

Use a pin to detach the doorbell from the bracket.



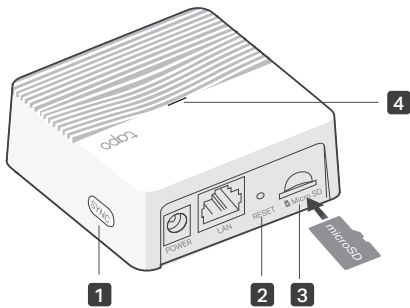
After detaching the doorbell, firmly pull out the battery.



**Need some help?**  
Visit <https://www.tapo.com/support/>  
for technical support, the user guide, FAQs,  
warranty & more



Hub Appearance



- 1** SYNC Button

Press to pair with the doorbell, or silence the hub when it rings.
- 2** RESET

Use a pin to press and hold for about 5 seconds until the hub LED quickly blinks red to reset the hub.
- 3** microSD Card Slot

Insert a microSD card\* to record doorbell videos locally. Initialize the microSD card within the Tapo app first.  
\*microSD card not included.
- 4** Status LED

Indicates the status of your hub.

Safety Information

- Do not use damaged charger or USB cable to charge the device.
- Do not use any other chargers than those recommend-ed.
- Do not use the device where wireless devices are not allowed.
- Adapter shall be easily accessible.
- Use only power supplies which are provided by manufacturer and in the original packing of this product. If you have any questions, please don't hesitate to contact us.
- Keep the device away from fire or hot environments. DO NOT immerse in water or any other liquid.
- Do not disassemble, repair or modify the product.
- Do not place near automatically controlled devices such as fire alarms. Radio waves emitted from this product may cause such devices to malfunction resulting in an accident.
- Observe restrictions on using wireless products in fuel depots, chemical plants or when blasting operations are in progress.
- Do not use liquid to clean the product. Only use a dry cloth.
- Never put metal objects inside the product. If a metal object enters the product turn off the circuit breaker and contact an authorised electrician.
- This product is not intended to be used when providing medical care. Consult the manufacturer of any personal medical devices, such as pacemakers or hearing aids to determine if they are adequality shielded from external RF (radio frequency) energy.
- Do not use this product in health care facilities. Hospitals or health care facilities may be using equipment that could be sensitive to external RF energy.
- Do not place heavy objects on top of the product.
- When you leave the product unused for a long time

Light Indications

Doorbell Status LED

Solid red	Starting up
Blinking red and green	Ready for pairing
Blinking green slowly	Pairing
Solid amber	Connected to the hub
Solid green	Connected to the cloud
Blinking red quickly	Doorbell resetting
Blinking green quickly	Doorbell updating
Blinking red once a minute	Low battery
Blinking red slowly	Offline

Hub Status LED

Solid red	Starting up
Blinking red and green	Ready for setup
Solid amber	Connected to router
Solid green	Connected to the cloud
Blinking green slowly	Pairing
Blinking red quickly	Hub resetting
Blinking green quickly	Hub updating

unplug the product from the power outlet.

- This product may interfere with other electronic products such as TV, radios, personal computers, phones or other wireless devices.
- Always follow the local waste and recycle laws when you get rid of the used battery.
- Do not use the product if the casing has been broken.
- Danger of electric shock.
- Never touch the product with wet hands.
- The mounting height should not be higher than 2 meters.
- Doorbell Operating Temperature: -20 °C ~ 45 °C (-4 °F ~ 113 °F)
- Hub Operating Temperature: 0 °C ~ 40 °C (32 °F ~ 104 °F)

Please read and follow the above safety information when operating the device. We cannot guarantee that no accidents or damage will occur due to improper use of the device. Please use this product with care and operate at your own risk.

CAUTION!

Risk of fire or explosion  
if the battery is replaced by an incorrect type

CAUTION!

Avoid replacement of a battery with an incorrect type that can defeat a safeguard.  
Avoid disposal of a battery into fire or a hot oven, or mechanically crushing or cutting of a battery, that can result in an explosion.  
Do not leave a battery in an extremely high tempera-ture surrounding environment that can result in an explosion or the leakage of flammable liquid or gas; Do not leave a battery subjected to extremely low air pressure that may result in an explosion or the leakage of flammable liquid or gas.

TP-Link hereby declares that the device is in compliance with the essential requirements and other relevant provisions of directives 2014/53/EU, 2009/125/EC, 2011/65/EU and (EU)2015/863.

The original EU declaration of conformity may be found at <https://www.tapo.com/support/ce/>

TP-Link hereby declares that the device is in compliance with the essential requirements and other relevant provisions of the Radio Equipment Regulations 2017.

The original UK declaration of conformity may be found at <https://www.tapo.com/support/ukca/>

